

SPECIFICATION

ZED 20.2 HV *variable stabilization*

TECHNICAL DATA

- Double pantograph + telescopic boom (main boom + one extension)
- Sigma boom movement enabled by connecting rods
- 640° turret rotation
- Proportional, electrohydraulic controls in basket and ground
- Engine start and stop controls from basket and ground
- Anti-slip, aluminium flatbed decking with tool tray walls
- Basket base in composite material with aluminium guardrails
- 65° right + 65° left hydraulic basket rotation
- Automatic hydraulically actioned basket levelling
- 4 hydraulic outriggers with ground pressure sensors
- Variable stabilization right and left
- Working envelope with moment limiting device
- Hydraulic system operated by vehicle's PTO
- Buzzer indicating PTO engaged
- Hour meter
- 230 V AC CE electrical socket in the basket
- Standard boom colours blue (RAL 5017) or white (RAL 9003)
- CE Certified

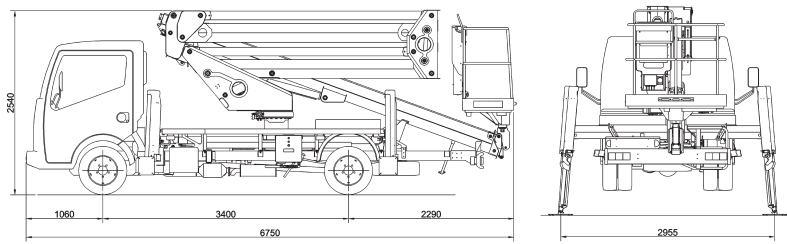
PERFORMANCE

| | |
|---------------------------|------------------|
| Working height | 20 m |
| Platform height | 18 m |
| Working outreach | 9,2 m |
| Capacity (2 people incl.) | 300 kg* |
| Basket dim. | 1400x700x1100 mm |
| GVW minimum | 3,5 t |

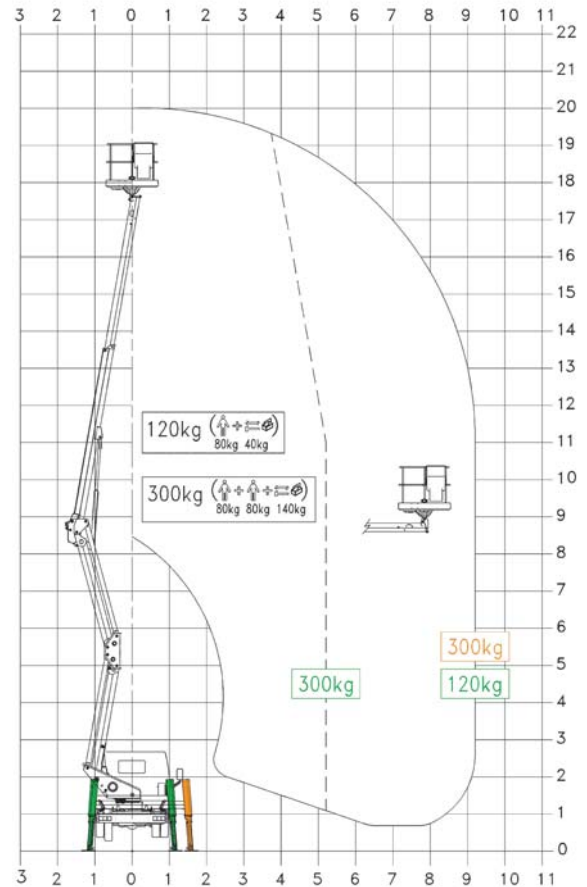
* With moment limiting device



DIMENSIONS



WORKING ENVELOPE

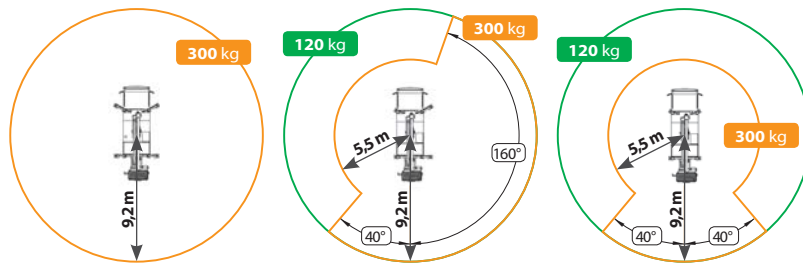


OUTRIGGER FOOTPRINT

Fully Extended

RH Or LH Side

Narrow Jacking



KEY POINTS



Product specifications are subject to change without notice or obligation. Technical features and drawings in this brochure are for illustrative purposes only. _ZED_20.2 HV - ed. 08/13



CTE S.p.A.

Headquarter and Factory - Rovereto (Tn): via Caproni, 7
Factory - Rivoli V.se (Vr): loc. Terramatta, 5

ph. +39 0464.48.50.50 - fax +39 0464.48.50.99
e-mail: info@ctelift.com

CTE UK Ltd - Enderby Leicestershire - UK
CTE FRANCE Sas - Achères - France



www.ctelift.com